

USB to Serial Adapter Driver Installation Manual

For Windows 98 / ME / 200 0 / XP / Vista / 7

Contents

Introduction Features & Specifications System Requirements Installing the Device Uninstalling the Device Disclaimer

Introduction

The USB to Serial adapter is your smart and convenient accessory for connecting RS232 serial devices to your USB equipped Windows host computer. It provides a bridge connection with a standard DB-9pin male serial port connector in one end and a standard Type A USB plug connector on the other end. You simply attach the serial device onto the serial port of the cable and plug the USB connector into your PC USB port. It allows a simple and easy way of adding serial connections to your PC without having to go thru inserting a serial card and traditional port configuration.

This USB to Serial adapter is ideal for connecting modems, cellular phones, PDAs, digital cameras, card readers and other serial devices to your computer. It provides serial connections up to 1Mbps of data transfer rate. And since USB does not require any IRQ resource, more devices can be attached to the system without the previous hassles of device and resource conflicts.

Finally, the USB to Serial adapter is a fully USB Specification compliant device and therefore supports advanced power management such as suspend and resume operations as well as remote wakeup. The USB Serial cable adapter is designed to work on all Windows operating systems.

Features & Specifications

- ✓ Smart USB to RS232 (DB 9pin male serial port) interface
- ✓ Supports various serial devices like modems, PDAs, cellular phones, digital cameras, card readers, and more.
- ✓ Easy Plug and Play Installation
- ✓ Full Compliance with the Universal Serial Bus Specification v1.1
- ✓ Supports the standard RS232 Serial Interface
- ✓ Supports automatic handshake mode
- ✓ Over 230Kbps data transfer rate
- ✓ Supports Remote Wakeup and Intelligent Power Management
- ✓ Provides Dual Buffers for upstream and downstream data transfer
- ✓ No IRQ resource required
- ✓ Bus Powered – no separate power supply or battery required

System Requirements

- ✓ Windows 98SE, Windows ME, Windows 2000, Windows XP, Windows Vista or Windows 7 operating system and higher
- ✓ AMD or Intel Pentium 133MHz or better based computer
- ✓ USB 1.1 or higher port
- ✓ USB to RS232 (Serial Port) Cable Adapter
- ✓ USB to RS232 Driver Utility Disk

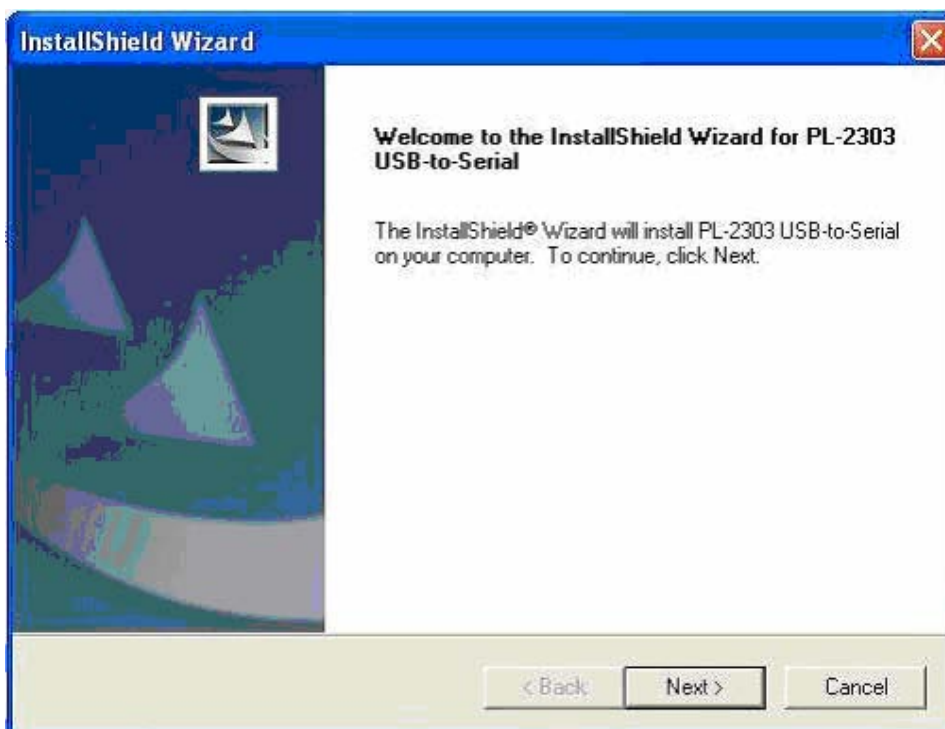
Installing the Device with InstallShield

This section will guide you on how to install the USB to Serial adapter under Windows 7, Windows Vista, Windows XP, Windows 2000, Windows ME, and Windows 98 operating systems.

Note: Please take notice of the installation order. First, run the InstallShield wizard, and then plug in the USB to Serial adapter.

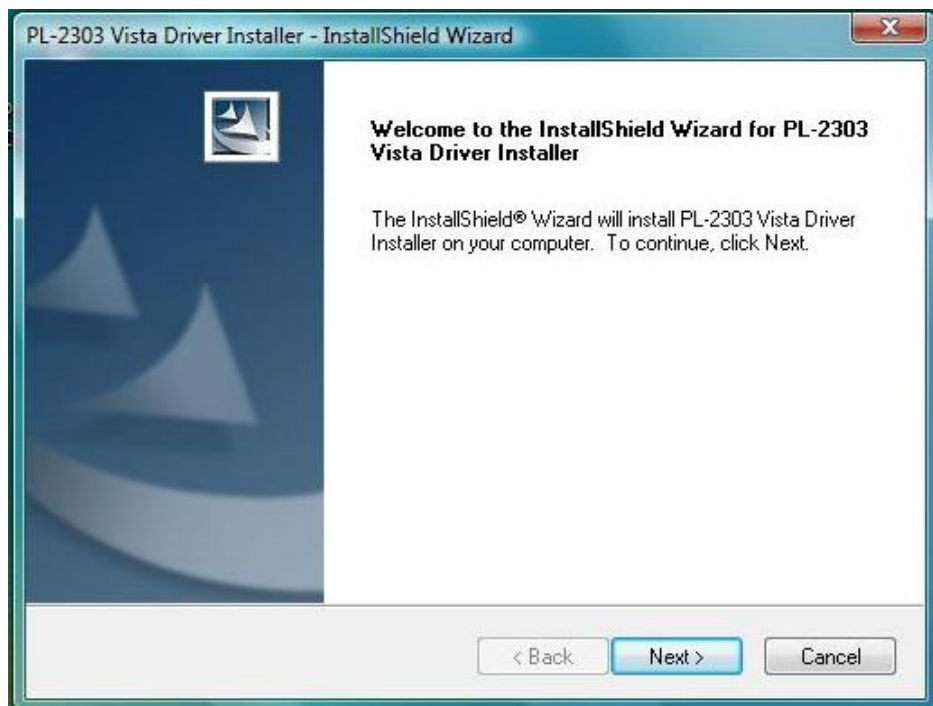
The following steps will show how to install the device under Windows 7, Windows Vista and Windows XP. Basically, the procedures for Windows XP are also somewhat the same for other previous Windows operating systems.

1. Power on your computer and boot to Windows.
2. Run or double click the InstallShield driver setup program “Driver Installer.exe” (for Windows 7, XP and previous versions) or “Vista Driver Installer.exe” (for



(Windows XP and below versions screenshot)

Windows Vista / 7). The InstallShield Wizard will be displayed on your screen to inform you that the driver will be installed on your computer. Click **Next** to continue and start the installation.



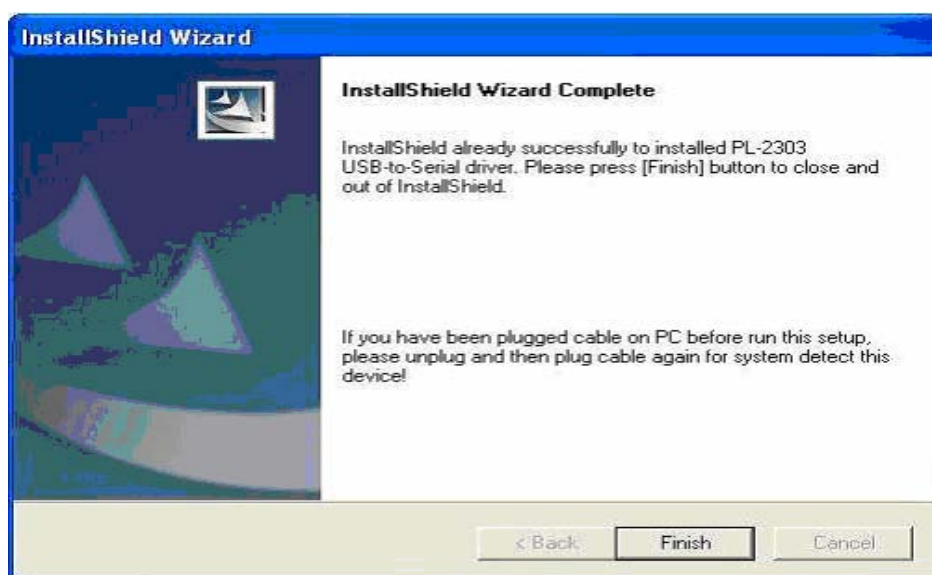
(Windows Vista / 7 screenshot)

3. The End User License Agreement (EULA) window will be shown, click to accept the terms of the agreement and click **Next** to continue.

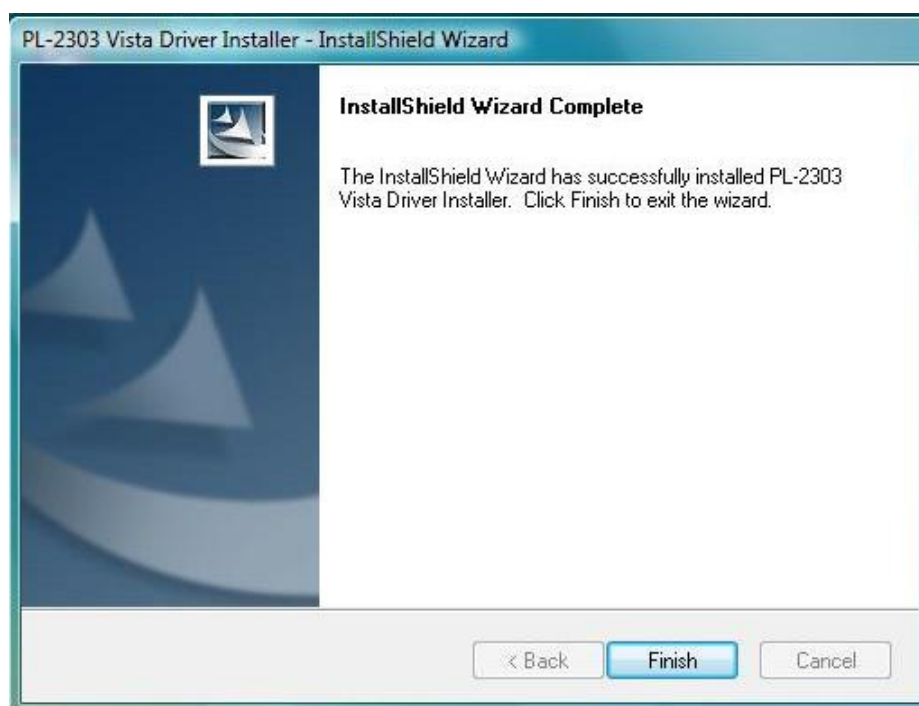


(Windows Vista screenshot)

4. Wait until the InstallShield Wizard informs you that driver installation is successfully installed. Click the **Finish** button to close the InstallShield program. If you have plugged the cable into the PC while running the setup installation, please unplug and re-plug the cable for the system to detect the device.



(Windows XP and below versions screenshot)



(Windows Vista screenshot)

5. Locate the USB port of your computer and plug in the USB to Serial adapter. Windows should detect the driver as **USB to Serial Com Port**. Before Windows installs this, it may prompt you that this device driver has not yet passed Windows XP Logo compatibility. Click **Continue Anyway**. Windows will then start to install the driver for the USB to Serial Com Port.



Uninstalling the Device Driver You have three selections to uninstall the driver:

For Windows XP and previous versions:

- Run the InstallShield Setup program again
- Run Start→ Programs→USB Serial Driver→ Uninstaller
- Control Panel→ Add or Remove Programs→USB to Serial

1. The InstallShield Wizard will appear and will let you choose if you want to reinstall the driver, uninstall the driver or exit the wizard. Select to **Uninstall driver**, and then click **Next** to continue.



2. When finished, the InstallShield Wizard will prompt you to restart Windows. Click the **Finish** button and wait for the system to restart your computer.



For Windows Vista: (same for window 7)

- Run the InstallShield Setup program again
- Run Start→ Programs→USB Serial Driver→ Uninstaller
- Control Panel→ Add or Remove Programs→Vista Driver Installer (for Windows Vista)

1. The InstallShield Wizard will appear and prompt you if you want to completely remove the driver, click **Yes** to continue.



2. When finished, the InstallShield Wizard will prompt you that uninstall is complete, click **Finish** to continue. You do not need to restart Vista after uninstall procedure.

