

DS-JP14 INSTALLATION GUIDE

Table of Contents

DS-JP14 General Description	1
DS-JP14 Typical Installation	2
HDSL Isolator Test CO (IOF) Portion of HDSL	3
HDSL Isolator Test OSP Portion of HDSL	4
DS-JP14 Block Diagram	5
DS-JP14 Wiring/Power Diagram	6
DS-JP14 Mounting Instructions Rear View	7
DS-JP14 Mounting Instructions Front View	8
DS-JP14 HDSL Jack Panel Specification	9
DS-JP14 HDSL Jack Panel Installation Test	10

DS-JP14 INSTALLATION GUIDE

DS-JP14 General Description



HDSL



- **Reduce MTTR**
- **Isolate Troubles**
- **Pretest Cable**

**** New ****

**HDSL Signal Generator
Technicians in the field can
measure (3K,100K,196K,400K and
Quiet Termination) -
pretest that a good HDSL signal
can be TX/RX on that cable pair.**

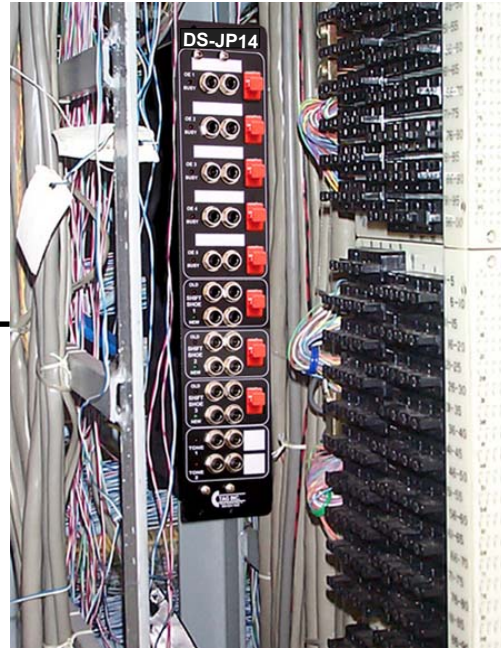
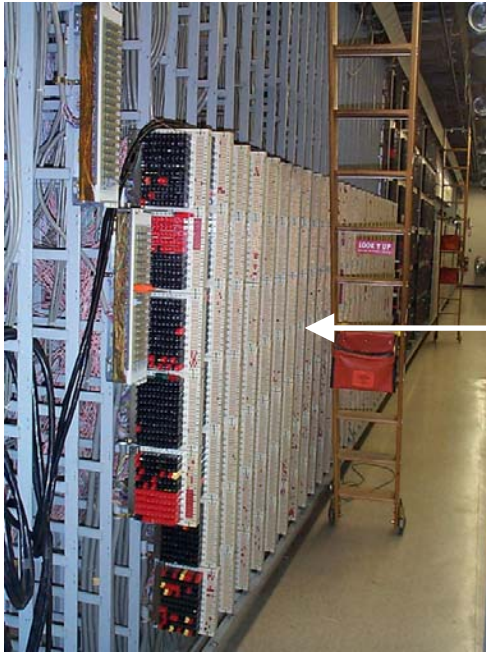


"Focus on Revenue Producing Digital Services"

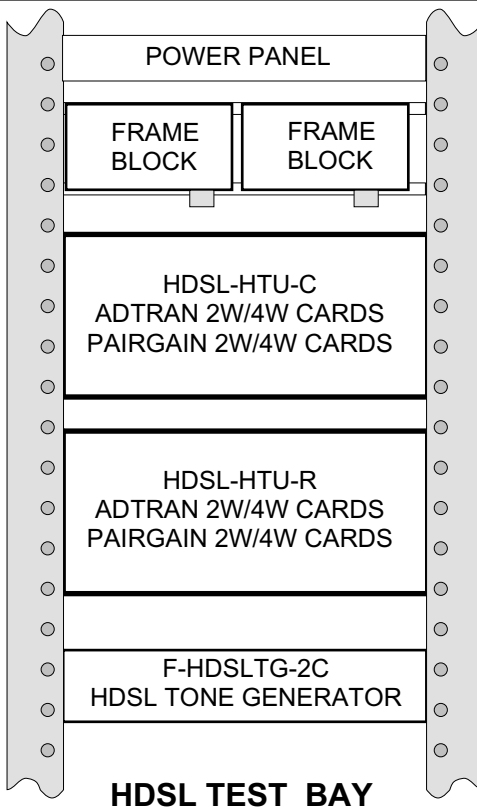
TAG's - Digital Services Jack Panel is flexible (various combinations - HDSL, ISDN...). Utilize Originating Equipment and Terminating equipment to test both Inter Office Facilities (IOF) and OSP (cable) to reduce Mean Time To Repair MTTR times !

DS-JP14 INSTALLATION GUIDE

Typical Vertical Side - MDF Installation



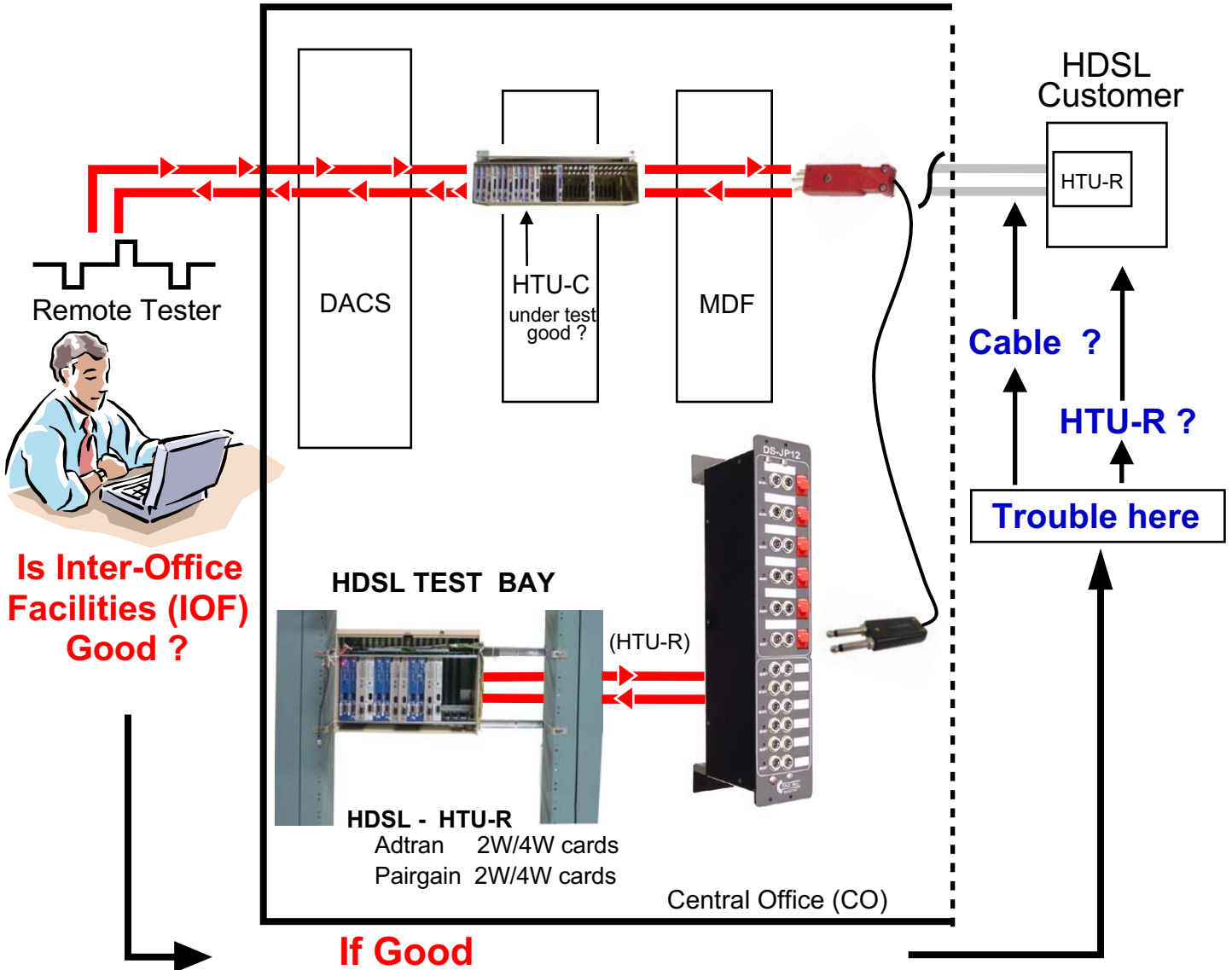
Equipment Line Up



DS-JP14 INSTALLATION GUIDE

HDSL ISOLATOR

Test CO (IOF) Portion of HDSL



Remote Tester has CO tech patch a good (HTU-R) to the HDSL cable pair being tested.

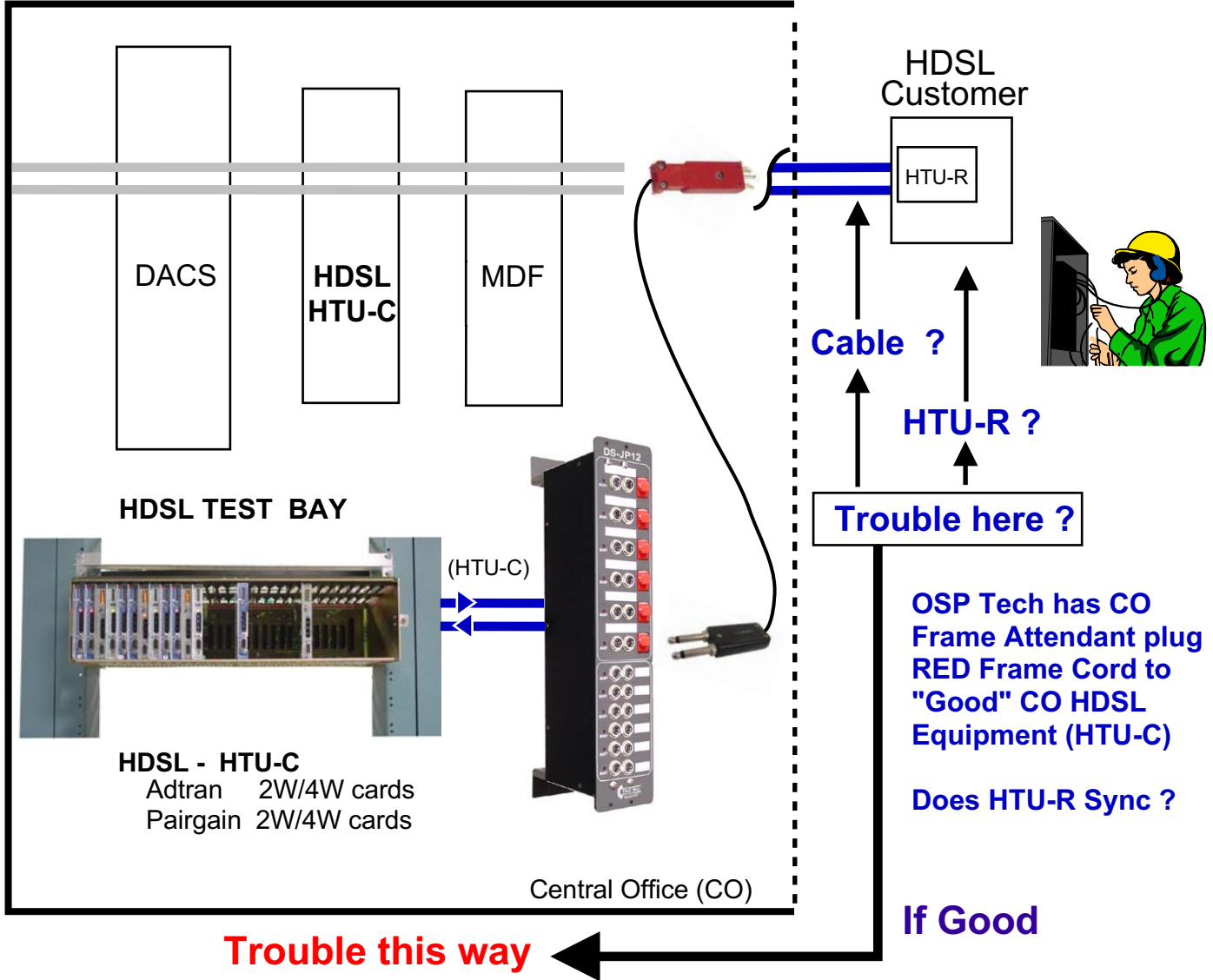
If good "SYNC" then HTU-C card and IOF facility good.

Trouble is outside CO - bad HTU-R or cable issue - see page 4.

DS-JP14 INSTALLATION GUIDE

HDSL ISOLATOR

Test OSP Portion of HDSL

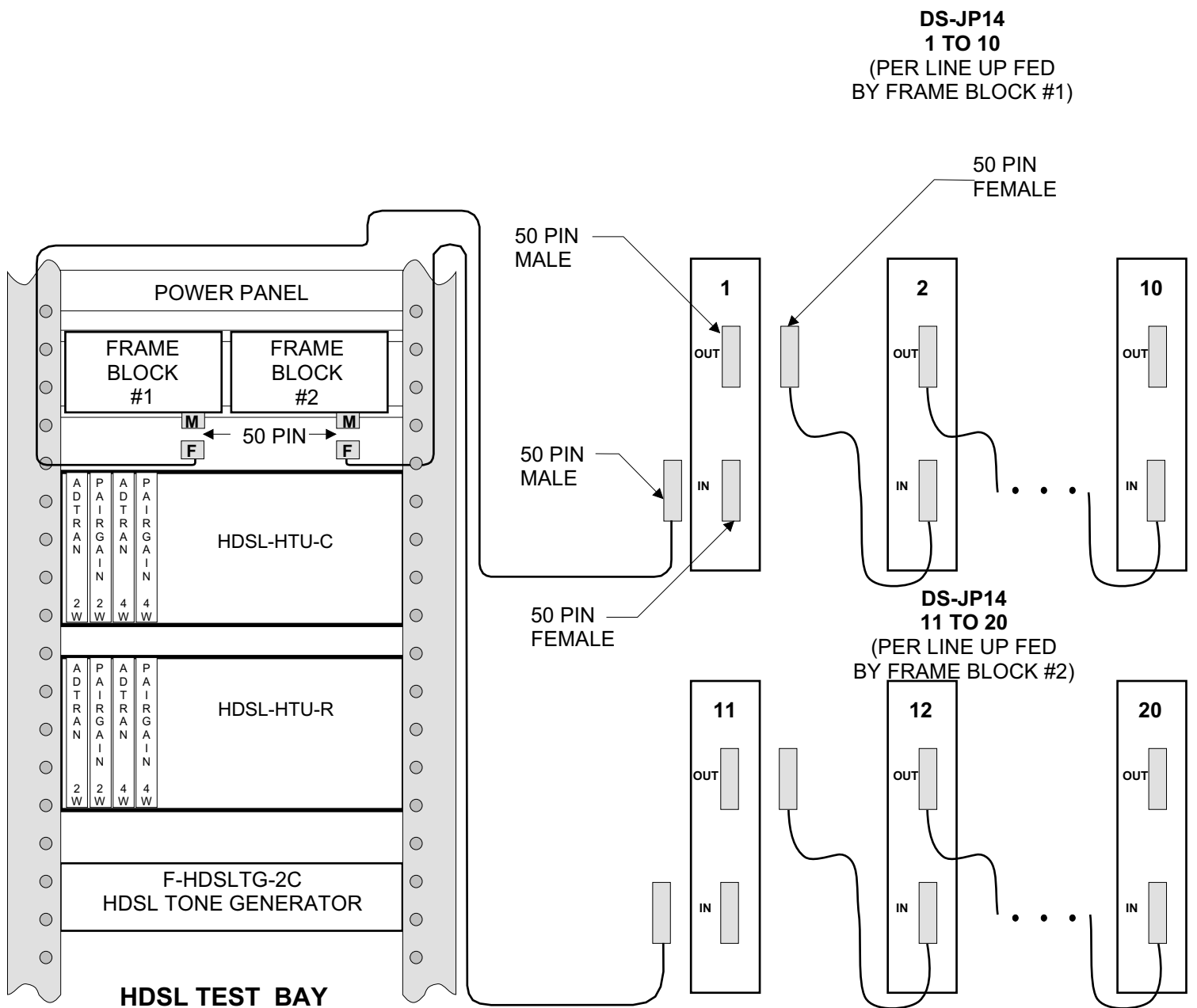


OSP tech has CO tech patch a good (HTU-C) to the HDSL cable pair being tested.
If good "SYNC" then OSP portion HTU-R and cable are good.

Can pre-qualify cable pairs for future HDSL deployment.

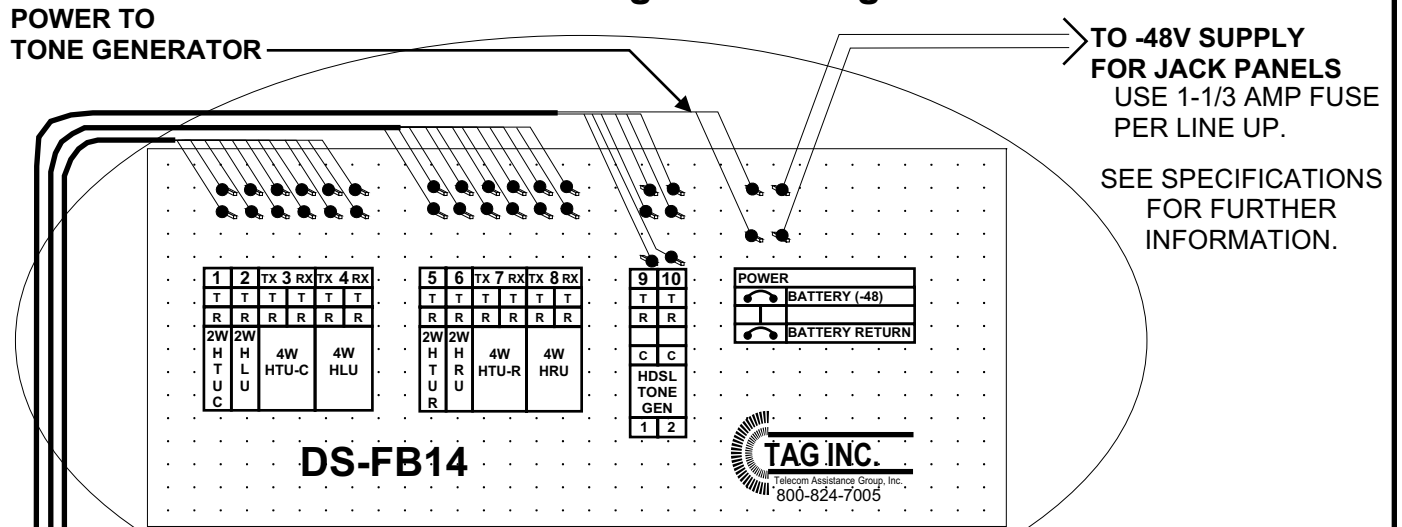
DS-JP14 INSTALLATION GUIDE

DS-JP14 Block Diagram

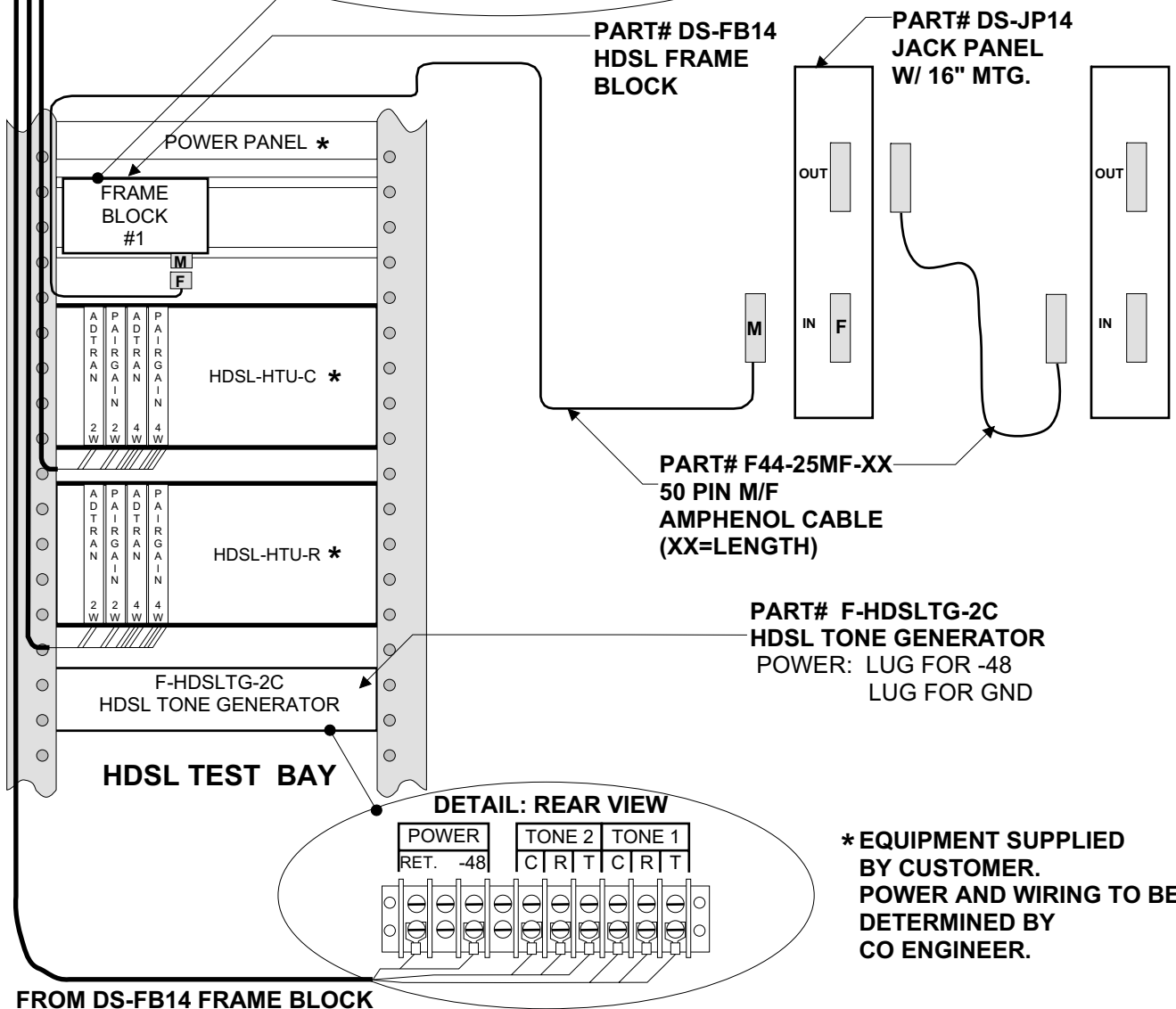


DS-JP14 INSTALLATION GUIDE

DS-JP14 Wiring/Power Diagram

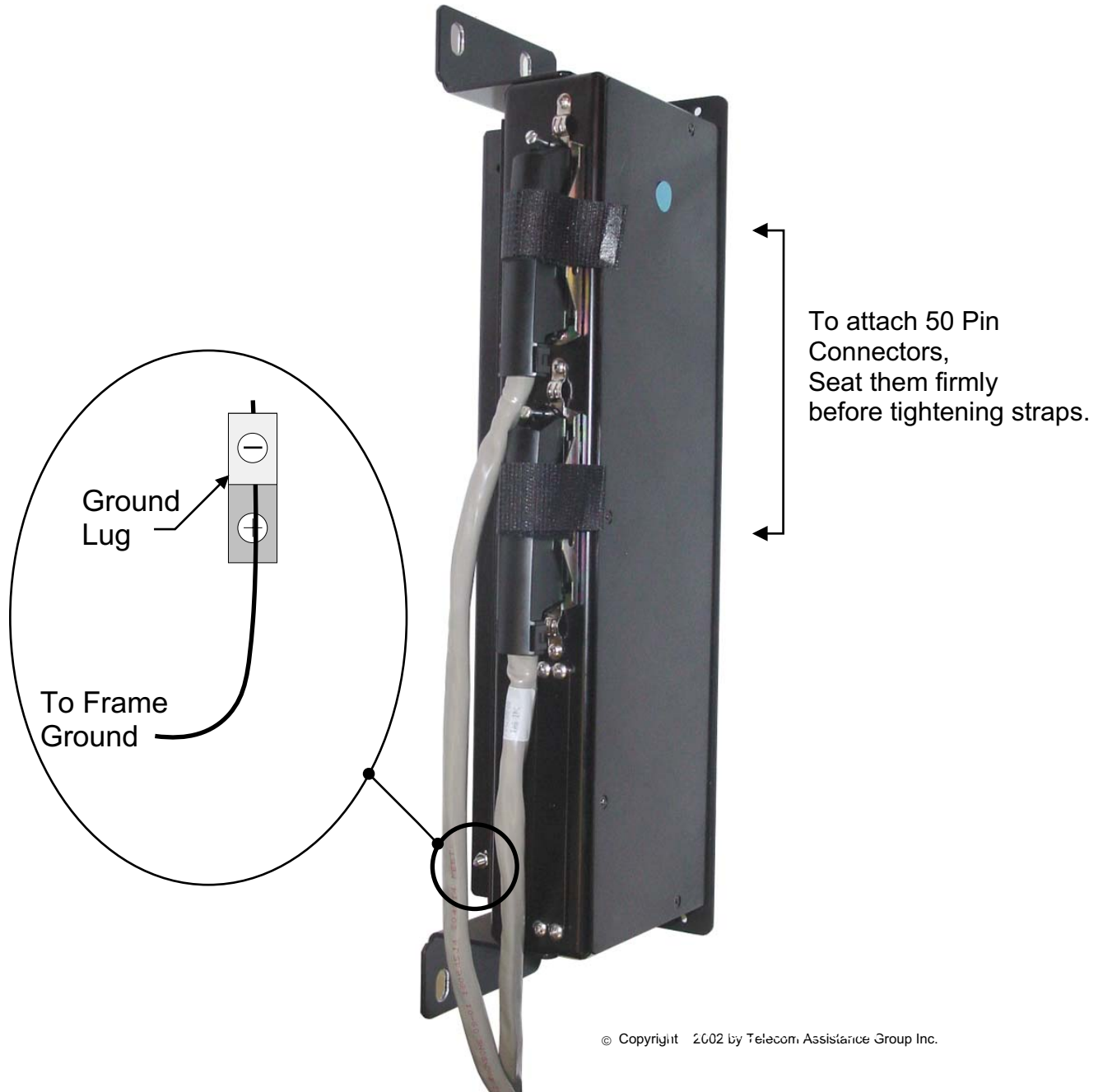


DETAIL



DS-JP14 INSTALLATION GUIDE

DS-JP14 Mounting Instructions Rear View



© Copyright 2002 by Telecom Assistance Group Inc.

Warning!!!:

- Connectors **MUST** be fully seated before tightening straps. Tightening the straps alone **WILL NOT** seat the connectors.

DS-JP14 INSTALLATION GUIDE

Typical DS-JP14 Mounting Instructions Front View

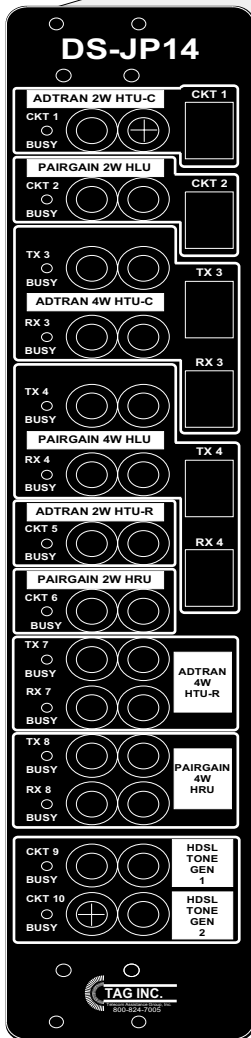
10-32 PAN
HEAD SCREW
(4 SUPPLIED)

#10 LOCK WASHER
(4 SUPPLIED)

1/4-20 HEX HEAD
SCREW
(2 SUPPLIED)

1/4" FLAT
WASHER
(2 SUPPLIED)

1/4" LOCK
WASHER
(2 SUPPLIED)



16"
CENTERS

MDF VERTICAL

DS-JP14 INSTALLATION GUIDE

DS-JP14 HDSL JACK PANEL SPECIFICATION

1. INPUTS/OUTPUTS

- 6 Protected pairs via 50 pin Champ connector
- 6 Unprotected pairs via 50 pin Champ connector
- 2 Pairs for tone generator via 50 pin Champ connector
- Power for indicators via 50 pin Champ connector
- Daisy-chain output to other DS-JP14 units via 50 pin Champ

2. PANEL CONNECTIONS

- 6 Protected frame cord jacks for WE-327 type plugs
- 6 Unprotected frame cord jacks pairs (6 jacks)
- 2 Frame cord jacks for HDSL tone generators
- 6 Protector sockets for standard 5 pin protectors

3. INDICATORS

- 6 Red LEDs - one for each protected circuit
- 6 Red LEDs - one for each unprotected circuit
- 2 Red LEDs - one for each tone circuit

4. POWER for INDICATORS

- Voltage -42 to -56 volts dc
- Current 0.1 amps Max.

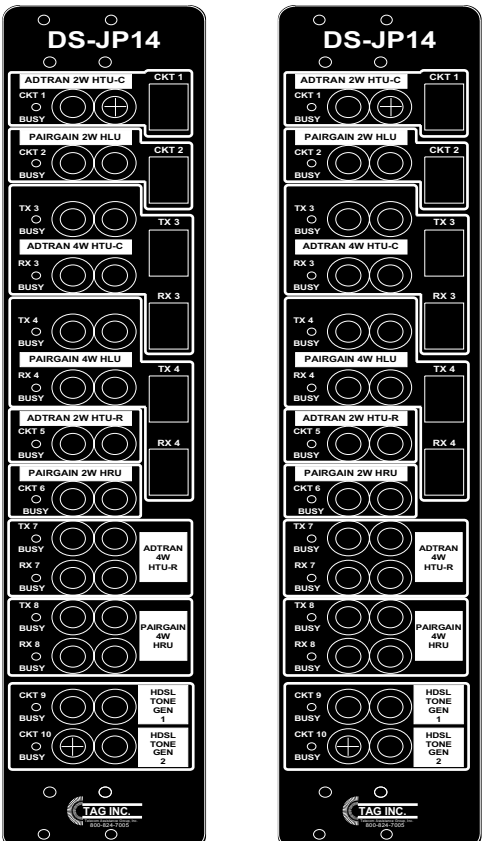
5. PHYSICAL

- Dimensions: Length = 15"
- Width = 3"
- Depth = 5 1/2"
- Mounting: MDF mounting brackets for 16" or 20" centers
- Weight: 4.5 pounds Max.

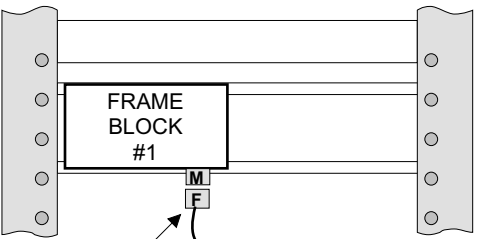
- | | | |
|-------------------------|-----------|----------------|
| Environment Temperature | Operating | 5 to 45 C |
| | Storage | 0 to 55 C |
| | Humidity | 5% to 95% RH |
| | | Non-condensing |

DS-JP14 HDSL Jack Panel Installation Test

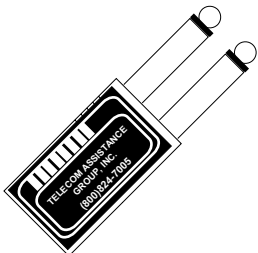
THIS PAGE IS INCOMPLETE!!



HDSL TEST BAY



REMOVE 50 PIN CABLE FROM THE DS-FB14 FRAME BLOCK. PLUG THE CABLE INTO THE CT-50 TO VERIFY CORRECT INSTALLATION.



CT-50JP14
USE CABLE 300187-19 TO TEST DS-JP14
50 PIN CABLE STREAKER

CIRCUIT 1	ADTRAN 2W HTU-C	R	T	2W HTU-C
CIRCUIT 2	PAIRGAIN 2W HLU	R	T	2W HLU
CIRCUIT 3	TX3 4W HTU-C	R	T	TX3 4W HTU-C
CIRCUIT 4	RX3 4W HTU-C	R	T	RX3 4W HTU-C
CIRCUIT 5	PAIRGAIN TX4 4W HLU	R	T	TX4 4W HLU
CIRCUIT 6	RX4 4W HLU	R	T	RX4 4W HLU
CIRCUIT 7	ADTRAN 2W HTU-R	R	T	2W HTU-R
CIRCUIT 8	PAIRGAIN 2W HRU	R	T	2W HRU
CIRCUIT 9	TX7 4W HTU-R	R	T	TX7 4W HTU-R
CIRCUIT 10	RX7 4W HTU-R	R	T	RX7 4W HTU-R
CIRCUIT 11	TX8 4W HRU	R	T	TX8 4W HRU
CIRCUIT 12	RX8 4W HRU	R	T	RX8 4W HRU
CIRCUIT 13	HDSL TONE GEN 1	R	T	HDSL TONE GEN 1
CIRCUIT 14	HDSL TONE GEN 2	R	T	HDSL TONE GEN 2
CIRCUIT 15	CKT 1 LED	R	T	CKT1 LED
CIRCUIT 16	CKT 2 LED	R	T	CKT2 LED
CIRCUIT 17	TX3 LED	R	T	TX3 LED
CIRCUIT 18	RX3 LED	R	T	RX3 LED
CIRCUIT 19	TX4 LED	R	T	TX4 LED
CIRCUIT 20	RX4 LED	R	T	CKT 9 LED
CIRCUIT 21	CKT5 LED	R	T	CKT 10 LED
CIRCUIT 22	GROUND	R	T	GROUND
CIRCUIT 23	GROUND	R	T	GROUND
CIRCUIT 24	POWER	R	T	POWER
CIRCUIT 25	POWER	R	T	POWER

NOTE: ALL OTHER TESTS, USE CABLE 300187-16 AND CKT REFERENCES