

Fujitsu 6200 Cabinet Solutions for Lumen/CenturyLink

New Fans & Heat Exchanger Replacements

TAG # TF-FUJ6200-01

**Lumen/CLK MAT #
1359018**

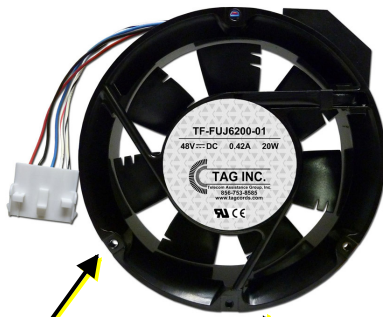
(NEW Heat Exchanger)

**(2) IN EACH
CABINET**

HEAT EXCH. # 1



FUJITSU 6200 CABINET (OUTSIDE VIEW)



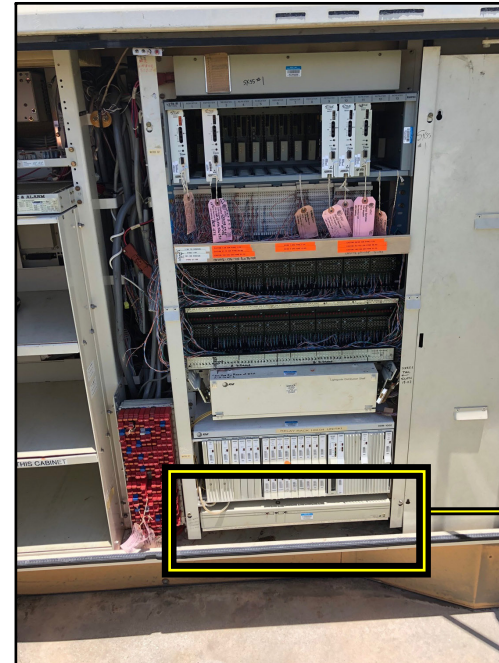
HEAT EXCH. # 2

*(located on the
right & left sides
of the cabinet)*

TAG # TF-FUJ6200-02

(NEW 48V Fan
w/ Power Prongs)

**(3) FANS IN
EACH TRAY**



FUJITSU 6200 CABINET (INSIDE VIEW)

**LORAIN / MARCONI
M.P.S.
428212000
FAN SHELF**

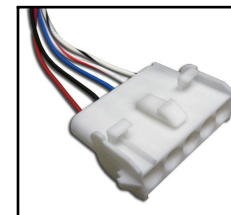
150 Cooper Rd. (F-15)
W. Berlin, NJ 08091

www.tagcords.com
Telecom Assistance Group

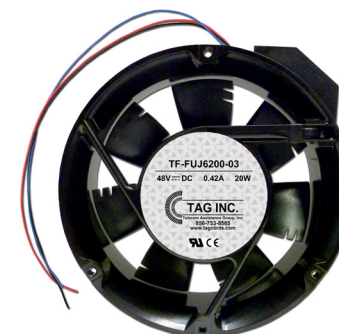
Telephone: (856) 753-8585
Fax : (856) 768-7645

Ordering Information:

TF-FUJ6200-01

Lumen/CLK MAT #
135901848 Volt Replacement Heat Exchanger for
Fujitsu 6200 Cabinets (Right & Left Side)
w/ 5 Wire Plug

TF-FUJ6200-02

48 Volt Replacement Fan for
Lorain / Marconi M.P.S. 428212000 Fan Shelf
found in **Fujitsu 6200 Cabinets**
w/ Power Prongs**TF-FUJ6200-02****TF-FUJ6200-03**

TF-FUJ6200-03

48 Volt Replacement Fan for
Fujitsu 6200 Cabinet Tray
w/ 3 Wire Open End & Power Prongs

TF-914EXMET-01

Lumen/CLK MAT #
135901748 Volt Replacement Fan for
Siemens 914EX Metro MXU Trays
w/ Power Prongs