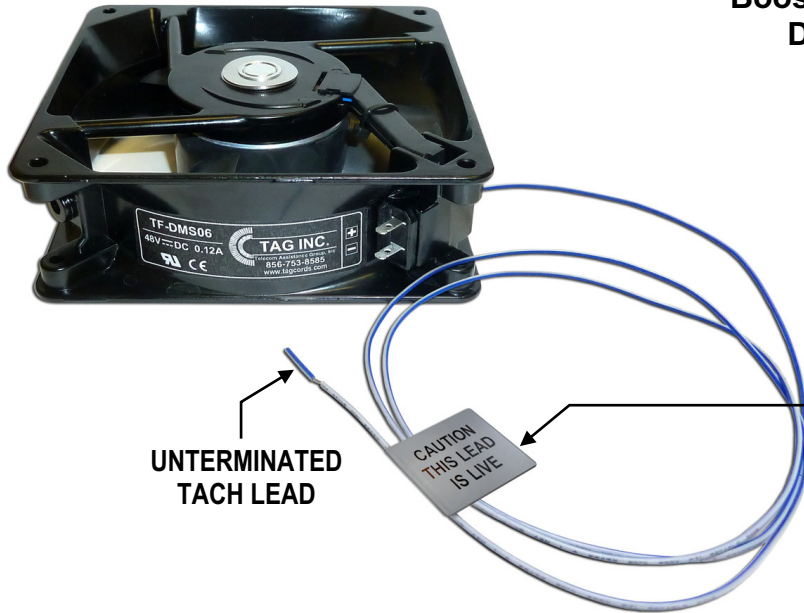


OSP Cabinet Replacement Fans

"DMS-100 OPM BFU / DMS-1 URBAN"

(Not for use in Nortel Access Node Fan Trays)



PN # TF-DMS06

48V Replacement Fan for
Booster Fan Unit (BFU) found in
DMS-100 OPM Cabinets

*w/ Power Prongs,
Unterminated Tach Lead
& (1) Butt Splice*

CAUTION
THIS LEAD
IS LIVE

DO NOT
REMOVE
UNTIL
HOOKUP

DMS-100 OPM CABINET BOOSTER FAN UNIT (BFU) w/ EXISTING FANS



*Also used in DMS-1
URBAN EMC RT BAY
(NT4A44AA fan unit)*

Ordering Information:

TF-DMS06 **48V Fan for Booster Fan Unit (BFU)**
found in DMS-100 OPM Cabinets
w/ Power Prongs, Unterminated Tach Lead & (1) Butt Splice
(also used in DMS-1 URBAN EMC RT BAY (NT4A44AA fan unit))

AT&T PID #
ATT.200002989

150 Cooper Rd. (F-15)
W. Berlin, NJ 08091

www.tagcords.com

Telephone: (856) 753-8585
Fax : (856) 768-7645

Telecom Assistance Group